

## THE SITUATION OF CARERS IN THE EU

By 2060, 155 million Europeans – 30% of the total European population – will be aged 65 and older. According to conservative estimates, 30% of these people (~45 million) will have at least one disability that disrupts activities of daily living. The need is even greater for Europeans aged 80+, for whom long-term care is expected to triple by 2060.

There are currently more than 100 million carers in Europe, a largely underestimated figure given the (self-)recognition problem of carers. These carers provide 80% of care across the EU. A typical carer is a woman between 45 and 75 years of age. Estimates suggest that the economic value of unpaid informal care as a percentage of the overall cost of long-term care in EU Member States ranges from 50 % to 90 %.

42% of non-working carers are in the lowest income quartile, almost twice the proportion for non-carers.

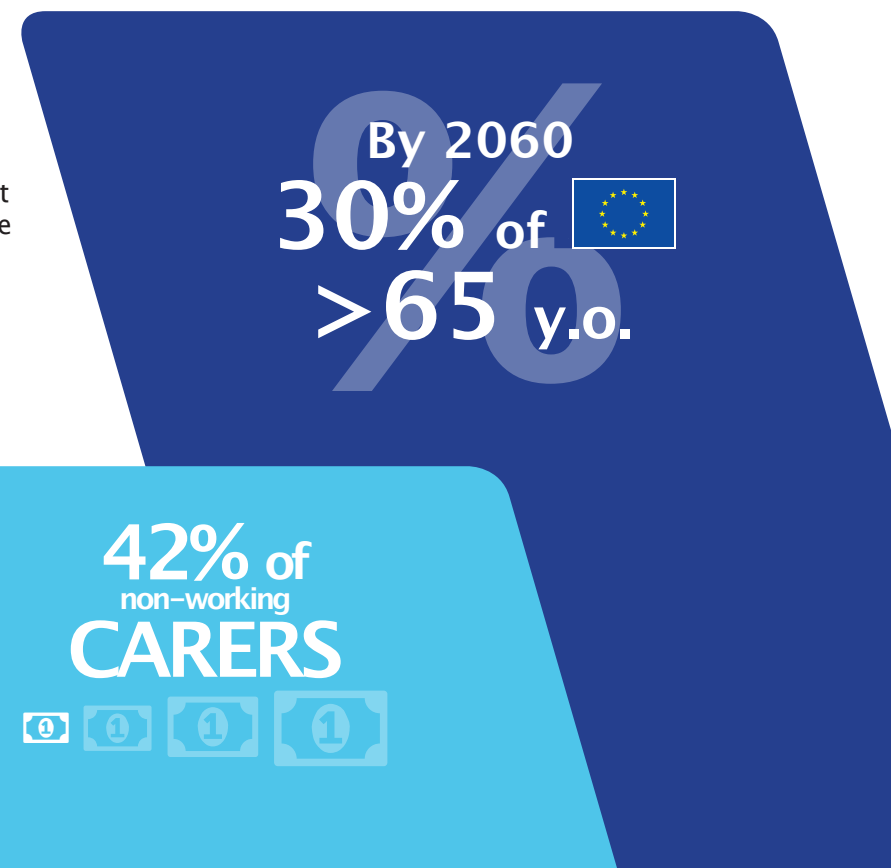
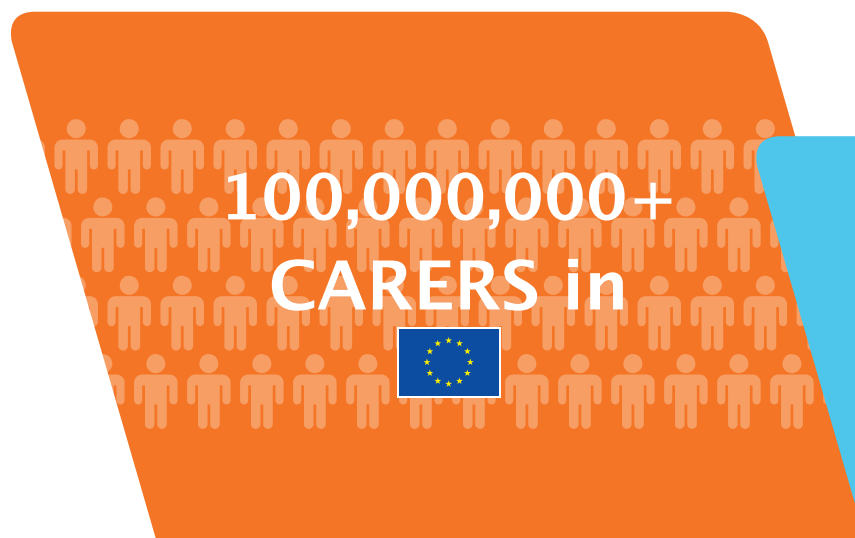
## WHAT DO CARERS NEED?

In 2011, a Eurobarometer survey identified the most useful things that governments could do to help informal carer (in order of preference).

These measures include:

- Provide financial remuneration for carers;
- Facilitate flexible working hours;
- Allow leave from work for care reasons;
- Give pension credits for care time;
- Provide a right to part-time work;
- Provide training;
- Fund respite care during caregiver holidays.

To be successful, policies targeted at the wellbeing and social inclusion of the carer should take into account the interplay between a broad set of social, employment and care policies: these issues cannot be separated from each other!



## NUMBER OF CARERS AND EXISTING SUPPORT MEASURES ACROSS THE EU

Country	Official number		Unofficial number		Formal recognition of carers	Financial remuneration		Leave to care		Pension credits for care time	Flexible working arrangements	Counseling	Respite care	Training	Self-help groups
						Care Allowance (direct)	Attendance Allowance (indirect)	For dependent relatives	For terminally ill relatives						
AT	290.000	3,50%	837.116	9,80%	✓	✗	✓	✓	✓	✓	—	✓	✓	✓	✗
BE	420.000	4%	1.358.830	12,10%	✓	✗	✓ Regional and local level	✓	✓	✗	—	✓ Regional and local level	✓ Regional and local level	✓ Regional and local level	✗
BG	N/A	N/A	N/A	N/A	✗	✗	✓	✓	✗	✗	—	✗	✓	✓	✗
HR	N/A	N/A	N/A	N/A	—	—	—	—	—	—	—	✗	✓	✗	✗
CY	N/A	N/A	N/A	N/A	✗	✗	✗	✓	✗	✗	—	✗	✗	✗	✗
CZ	281.000	2,70%	1.263.600	12%	✗	✗	✓	✓	✗	✓	✓	✓	✓ Regional and local level	✓	✓
DE	3.256.000	4%	8.907.800	11%	✓	✓	✗	✓	✗	✓	—	✗	✓	✓	✗
DK	20.000	0,40%	524.799	9,30%	✓	✓ local level	✗	✓	✓	✓	—	✓	✓	✓	✓ local level
EE	N/A	N/A	N/A	N/A	✗	✓ local level	✗	✓	✗	✗	—	✓	✓	✓	✓ local level
FI	N/A	N/A	350.000	6,30%	✓	✓ local level	✗	✓ local level	✗	✓	✓ local level	✓	✓ local level	✓ local level	✓ local level
FR	2.102.000	3,30%	7.115.500	10,70%	✓	✗	✓ regional level	✓	✓	✗	✓ local level	✓	✓ local level	✓	✓ local level
EL	273.000	2,50%	947.430	8,70%	✗	✗	✓	✓	✗	✗	—	✓ local level	✓	✓ local level	✗
HU	N/A	N/A	N/A	N/A	✗	✓	✗	✓	✗	✗	—	✗	✓	✗	✗
IE	187.000	4,10%	674.082	14,60%	✓	✓	✗	✓	✗	✓	✓	✓ local level	✓ Regional and local level	✓ local level	✓ local level

Country	Official number		Unofficial number		Formal recognition of carers	Financial remuneration		Leave to care		Pension credits for care time	Flexible working arrangements	Counseling	Respite care	Training	Self-help groups
						Care Allowance (direct)	Attendance Allowance (indirect)	For dependent relatives	For terminally ill relatives						
IT	4.035.000	7,00%	9.847.980	16,20%	✓	✗	✓	✓	✗	✓	✓ Regional level	✓ Regional and local level	✓	✓	✓ Regional and local level
LV	N/A	N/A	N/A	N/A	✗	✗	✗	✗	✗	✗	–	✓	✓	✓	✓
LT	N/A	N/A	N/A	N/A	✗	✗	✓	✓	✗	✓	–	✗	✗	✓	✗
LU	4.752	1,00%	N/A	N/A	✓	✗	✓	✓	✓	✓	✓ local level	✓	✓	✓	✓
MT	N/A	N/A	N/A	N/A	✗	✗	✓	✓	✓	✓	✓ local level	✗	✓	✗	✗
NL	3.500.000	21,30%	1.923.180	11,40%	✓	✓ local level	✓	✓ local level	✗	✗	✓ local level	✓ local level	✓	✓ local level	✓ local level
PL	1.214.000	3,20%	3.915.030	10,30%	✗	✗	✓	✓	✗	✗	–	✗	✗	✗	✗
PT	N/A	N/A	N/A	N/A	✗	✗	✓ Regional level	✓	✗	✗	–	✗	✓	✓	✓ local level
RO	N/A	N/A	N/A	N/A	✗	✗	✓	✓	✗	✗	–	✗	✗	✓	✗
SK	58.000	1,10%	N/A	N/A	✗	✓	✓	✓	✗	✗	–	✗	✓	✗	✗
SI	N/A	N/A	N/A	N/A	✗	✗	✗	✓	✗	✓	–	✗	✗	✗	✓ local level
ES	427.000	0,9%	7.155.810	15,3%	✗	✗	✓	✓	✗	✗	–	✓	✓	✓	✓ local level
SE	200.000	2,2%	750.240	8%	✓	✓	✓	✗	✓	✗	–	✓	✓	✗	✓
CH	N/A	N/A	1.047.168	10,8%	–	–	–	–	–	–	–	–	–	–	–
UK	5.550.000	8,9%	9.820.720	15,2%	✓	✓ local level	✓	✓ local level	✗	✓	✓ local level	✓ Regional and local level	✓	✓ local level	✓ local level



**EUROCARERS**

EUROPEAN ASSOCIATION  
WORKING FOR CARERS



Eurocarers receives support  
from The European Union through the programme for  
Employment and Social Innovation (EASI Programme 2014–2017)

✉ 3, Rue Abbé Cuypers – 1040 Brussels – Belgium | ☎ 0032 (0)2 741 24 05 | 📧 [info@eurocarers.org](mailto:info@eurocarers.org)  
🌐 [www.eurocarers.org](http://www.eurocarers.org) | 📘 [EuropeanAssociationWorkingForCarers](https://www.facebook.com/EuropeanAssociationWorkingForCarers) | 📺 [@Eurocarers\\_info](https://twitter.com/Eurocarers_info)