

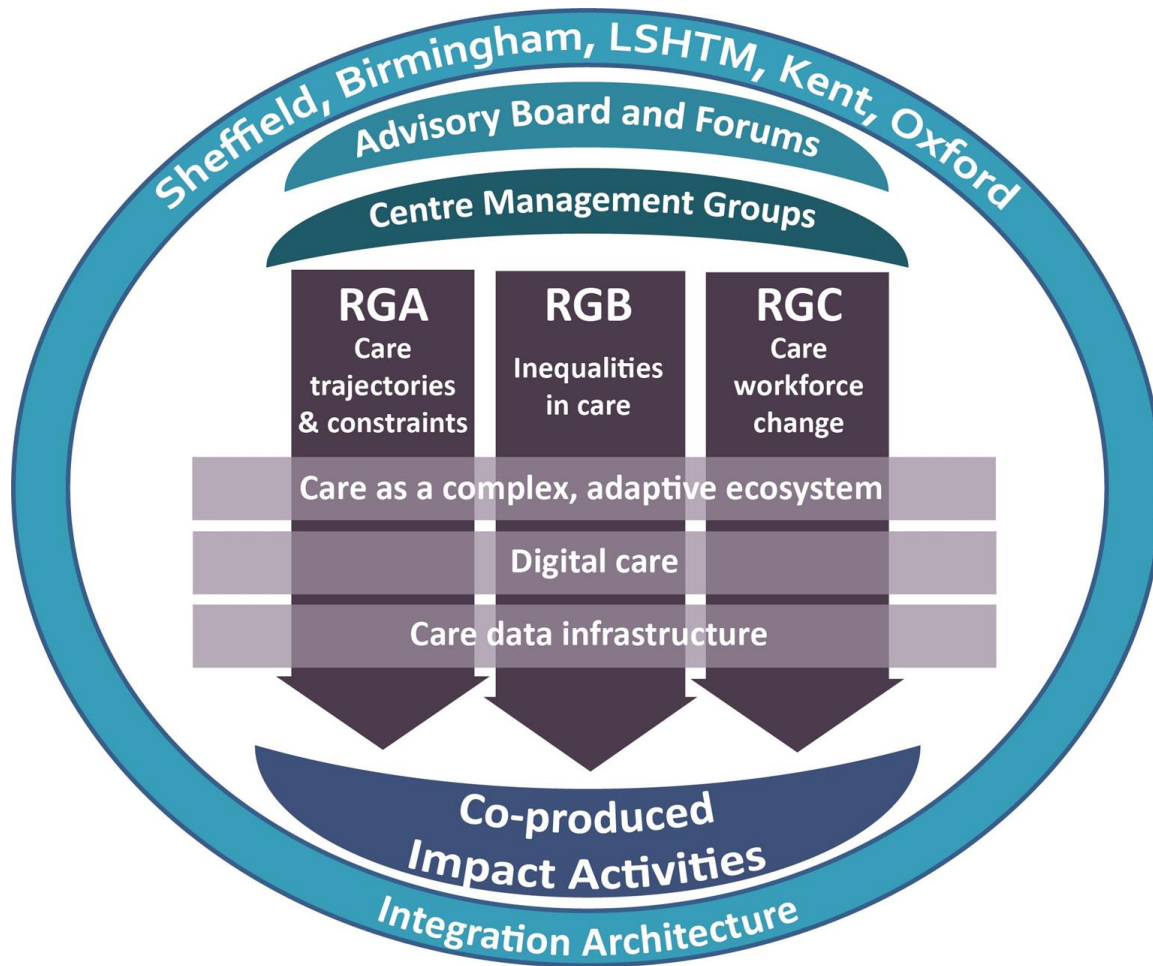


# What have we learned over the last year as the Centre for Care?

Becky Driscoll, Research Associate  
Eurocarers Research tour de table, 30th Nov 2023



# About the Centre for Care



**Director:** Sue Yeandle (PI)

**Deputy Director:** Nathan Hughes

**Centre Manager:** Kelly Davidge

**Advisory Board chair:** Robert Anderson

**Research Associate (Director's team):**

Becky Driscoll

*Funding £10m ESRC Centres award over 5 years*

# Our plans: The Centre for Care's vision

**Over 10-15 years,  
the Centre for Care will:**

- **Fill critical gaps in knowledge**
- **Push boundaries**
- **Make a difference in people's lives**
- **Create new data infrastructure**
- **Build future research capacity**



**“Care”**

***“The support needed in daily life by millions of people of all ages with disabilities, long-term conditions or in vulnerable circumstances”***

# Highlights from the past year

Some reflections and highlights from fieldwork to date:

- Borders and care (Research Group A)
- Ecosystem as an ecological metaphor (Theme 1)

And some of our early outputs and impact



# Borders & Care fieldwork: where are we now?

**Aim:** to understand the role of bordering processes in shaping experiences of care depletion within the care convoys of people with migration experiences in the UK

## **3-year plan:**

- Oral histories with older people from Sheffield with diverse migration backgrounds.
- Semi-structured interviews with people in care relations with the oral history participants.

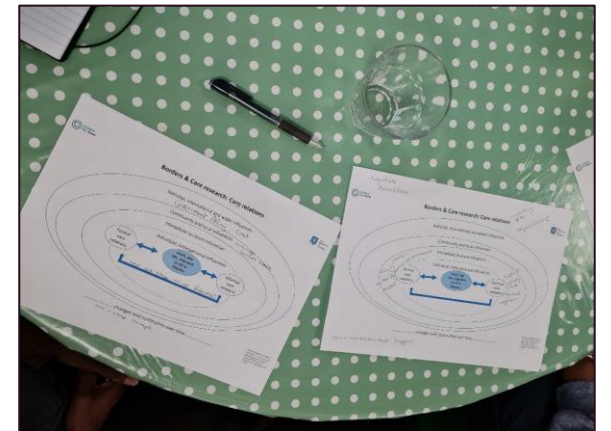
## **Update:**

Currently undertaking oral histories (3 sessions per person) with participants aged 50-90.

Data collection from two groups: 1) People who migrated to the UK to join the post-WW2 workforce, from across the British Empire; 2) People who migrated to the UK due to postcolonial conflict/violence.

# Fostering inclusive research: more than methods alone

- **Co-production:** Building ethical research relationships with community contacts (organisations, individuals) is an ongoing process, requiring time, resources, and reflexivity around academia's contribution to uneven power dynamics.
- **Consent is a negotiated and ongoing process,** inextricably linked to trust-building.
- **Embedding reciprocity:** joint submission to APPG call for evidence on poverty and migration.



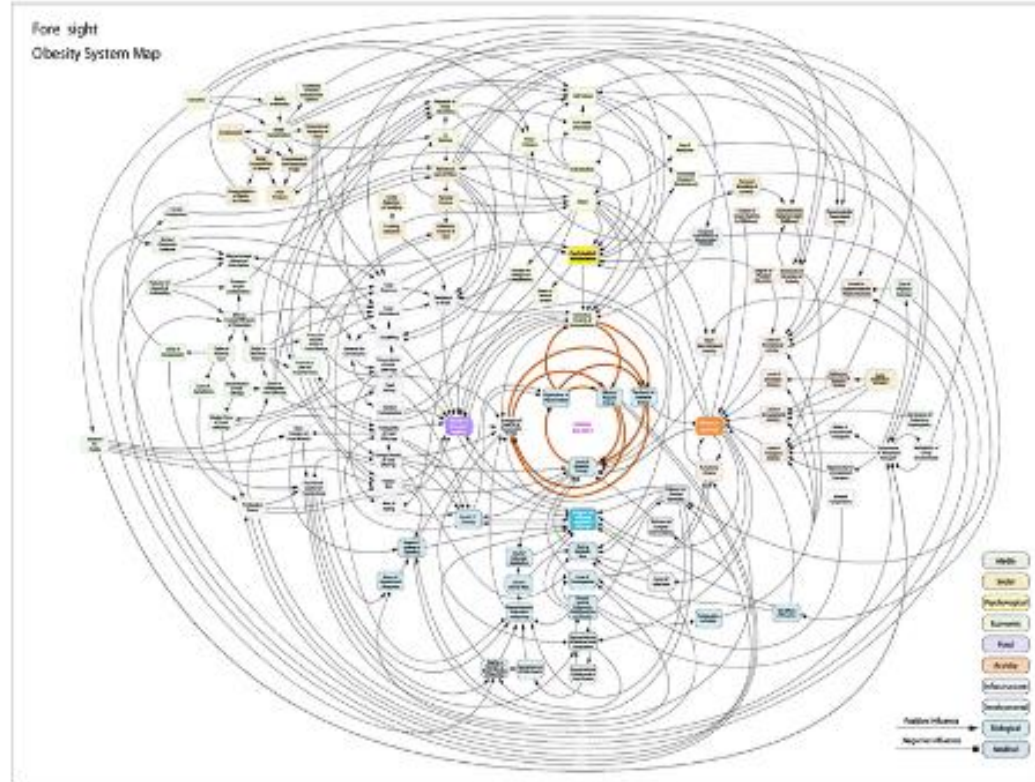
*Pre-research co-production session, community partner, January 2023*



# Ecosystem as ecological metaphor

Attempts to chart systems can be confusing and can lead to fatalism and inaction

(Vandenbroeck et al., 2007, cited in French et al., 2023)



# Ecosystem as ecological metaphor

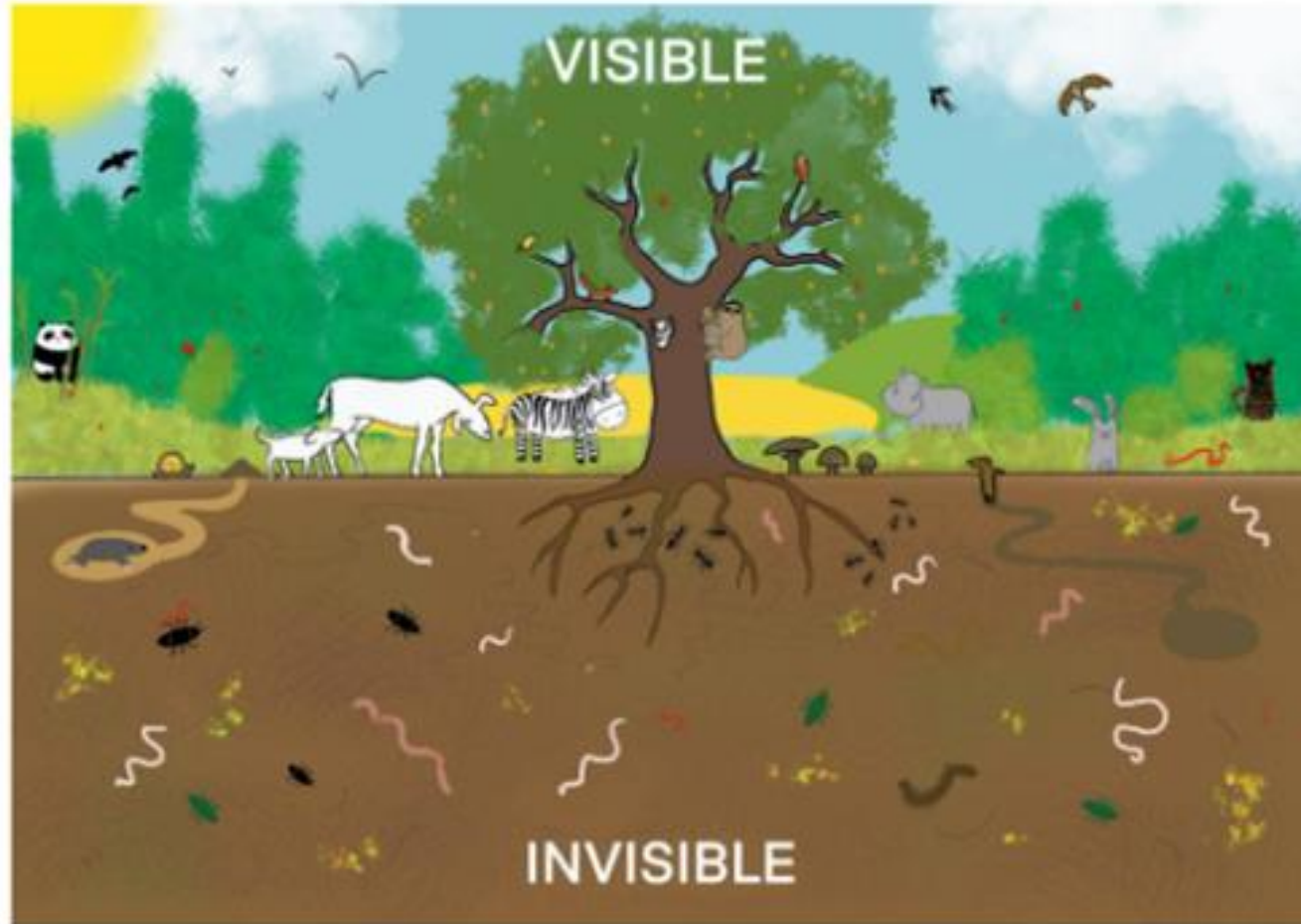
Ryan Wong,  
Northumbria  
University  
described  
attempts to  
research complex  
systems as:



It can't be done and  
we need to find ways  
to make it  
manageable

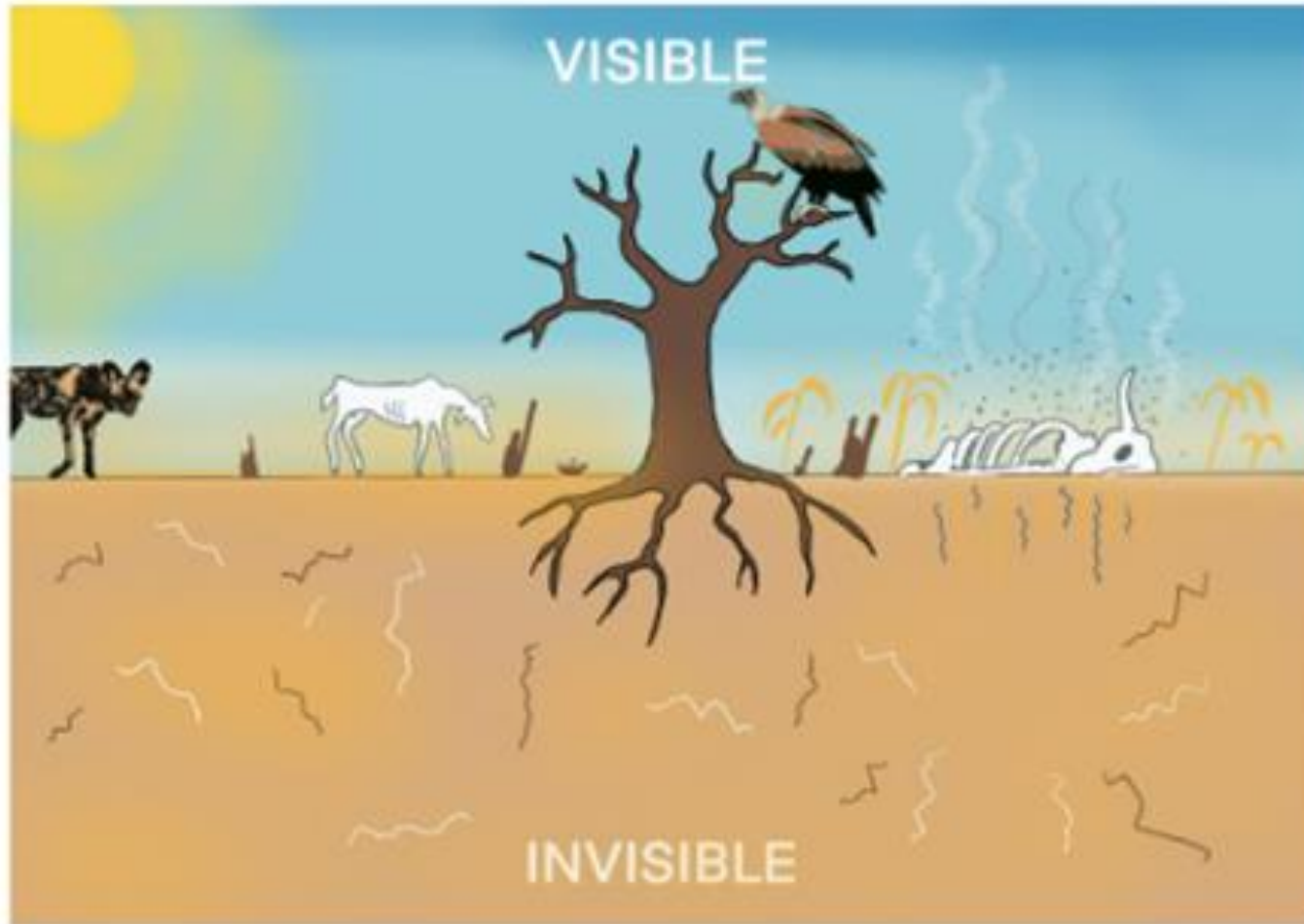


# A thriving ecosystem should look like this:

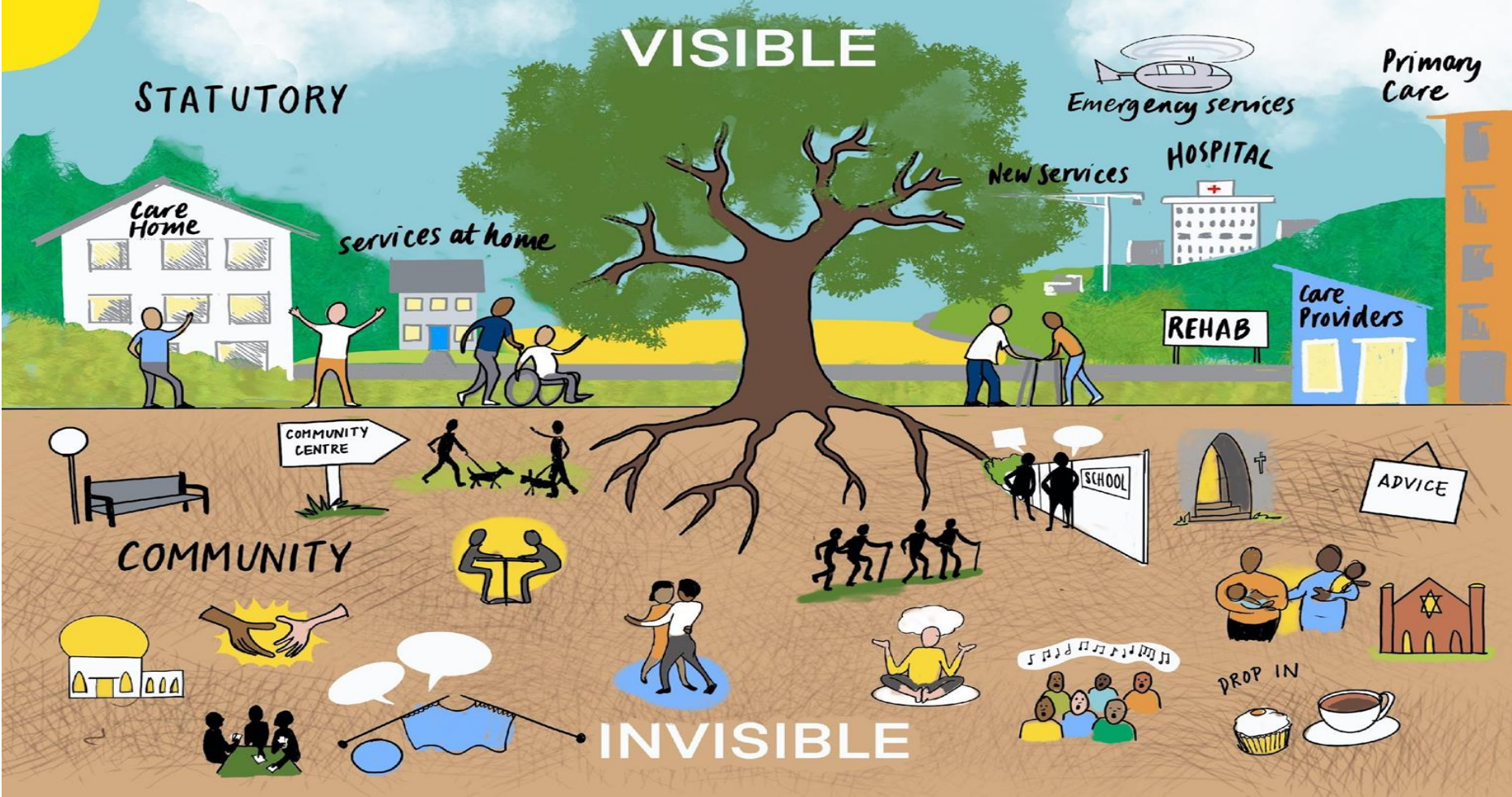


Images by  
Laura  
Brodrick,  
Think Big  
Picture

# But too often it looks like this:



# A thriving social care ecosystem:





# Outputs and impact so far

- Working Papers:
  - What does the concept of an ecosystem offer to social care?
  - Policy, Care and Technology in the UK
- Carers UK collaborations
  - Transitions in and out of unpaid care
  - Economic value of care
- 15+ evidence submissions to government consultations and parliamentary inquiries
- Media outputs
- Research workshop events

Research Tour de Table, Eurocarers - 30th November 2023



**Centre for Care**

**UKRI** Economic and Social Research Council

FUNDED BY **NIHR** National Institute for Health and Care Research

Working Paper 2 / June 2023

**What does the concept of an ecosystem offer to social care? A narrative review of the ecosystem literature**

Dr Emily Burn and Professor Catherine Needham

**SUMMARY** This paper provides a narrative literature review of the concept of ecosystem. It considers how the concept has been applied to public services and the contribution this conceptual framework could make to our understanding of social care. In this narrative review we focus on adult social care, defined as support for people with age-related frailty, disability or mental health conditions and unpaid carers.

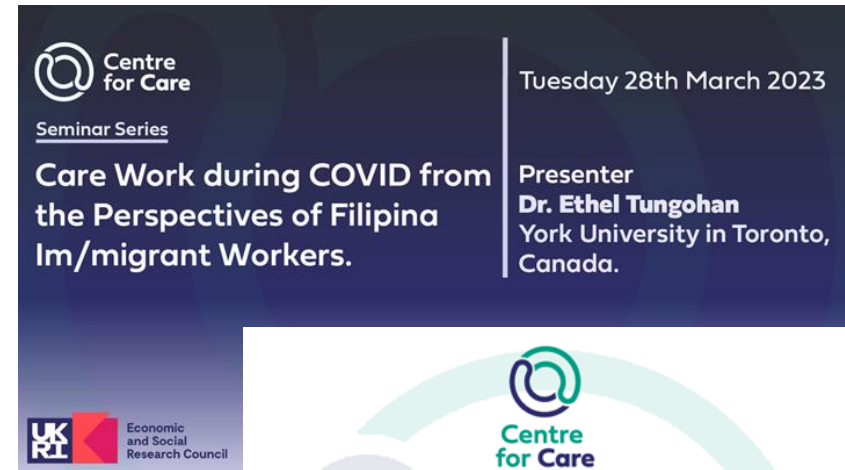
# Outputs and impact so far

Alongside internal events (theory building workshops, research methods seminars), the Centre holds:

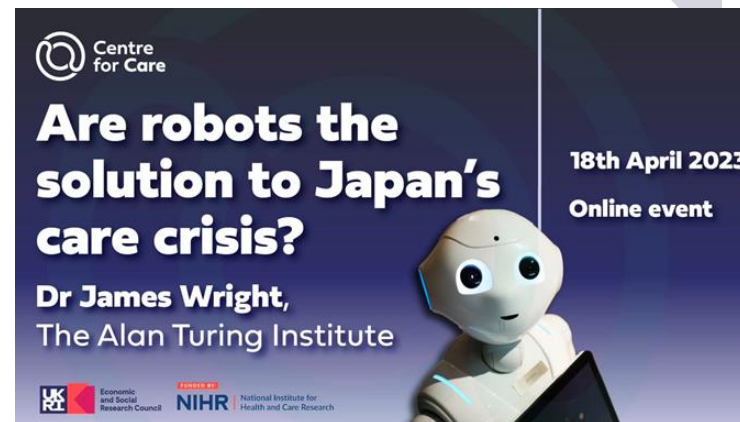
- Technology and care expert-led sessions
- Centre for Care research seminars
- Voice Forums

Outputs include:

- Podcasts
- Commentaries
- Reports
- Research collaborations, Associates model...



Centre for Care  
Seminar Series  
Care Work during COVID from the Perspectives of Filipina Im/migrant Workers.  
Presenter  
Dr. Ethel Tungohan  
York University in Toronto, Canada.  
Tuesday 28th March 2023  
UKRI Economic and Social Research Council



Centre for Care  
Are robots the solution to Japan's care crisis?  
18th April 2023  
Online event  
Dr James Wright,  
The Alan Turing Institute  
UKRI Economic and Social Research Council  
NIHR National Institute for Health and Care Research



Centre for Care  
CARE MATTERS  
PODCAST  
UKRI Economic and Social Research Council





The University  
Of  
Sheffield.



UNIVERSITY OF  
BIRMINGHAM



LONDON  
SCHOOL OF  
HYGIENE  
& TROPICAL  
MEDICINE



UNIVERSITY OF  
OXFORD



**Centre for Care Director:** Professor Sue Yeandle

**Centre for Care Deputy Director:** Professor Nathan Hughes

**Please get in touch if you would like to know more, or to work with us on related issues, by contacting our support team:**

**Centre Manager:** Dr Kelly Davidge [k.s.davidge@sheffield.ac.uk](mailto:k.s.davidge@sheffield.ac.uk)

**Centre Administrator:** Sarah Givans [s.givans@sheffield.ac.uk](mailto:s.givans@sheffield.ac.uk)

**Web:** [www.centreforcure.ac.uk](http://www.centreforcure.ac.uk)

**Twitter:** [@CentreForCare](https://twitter.com/CentreForCare)

**LinkedIn:** <https://www.linkedin.com/company/centre-for-care/>



Economic  
and Social  
Research Council

FUNDED BY

**NIHR** | National Institute for  
Health and Care Research